



ELSEVIER

Precambrian Research 116 (2002) 165–166

**Precambrian
Research**

www.elsevier.com/locate/precamres

Erratum

Erratum to “Structural evolution of the Warrawoona Greenstone Belt and adjoining granitoid complexes, Pilbara Craton, Australia: implications for Archaean tectonic processes”

[Precambrian Res. 112 (2001) 107–147][☆]

A. Kloppenburg *, S.H. White, T.E. Zegers

Geodynamics Research Institute, Utrecht University, Budapestlaan 4, 3584 CD Utrecht, The Netherlands

Received 18 February 2002

The Publisher regrets that in the above article Figure 3 was incorrectly published in place of Figure 4(a). The correct Figure 4(a) is reproduced correctly on the following page.

The Publisher would like to apologise sincerely for any inconvenience caused.

[☆] PII of original article: S0301-9268(01)00172-3.

* Corresponding author. Present address: Midland Valley Exploration Ltd., 14 Park Circus, Glasgow G36AX, UK. Tel.: +44-141-332-2681.

E-mail address: armelle@mve.com (A. Kloppenburg).

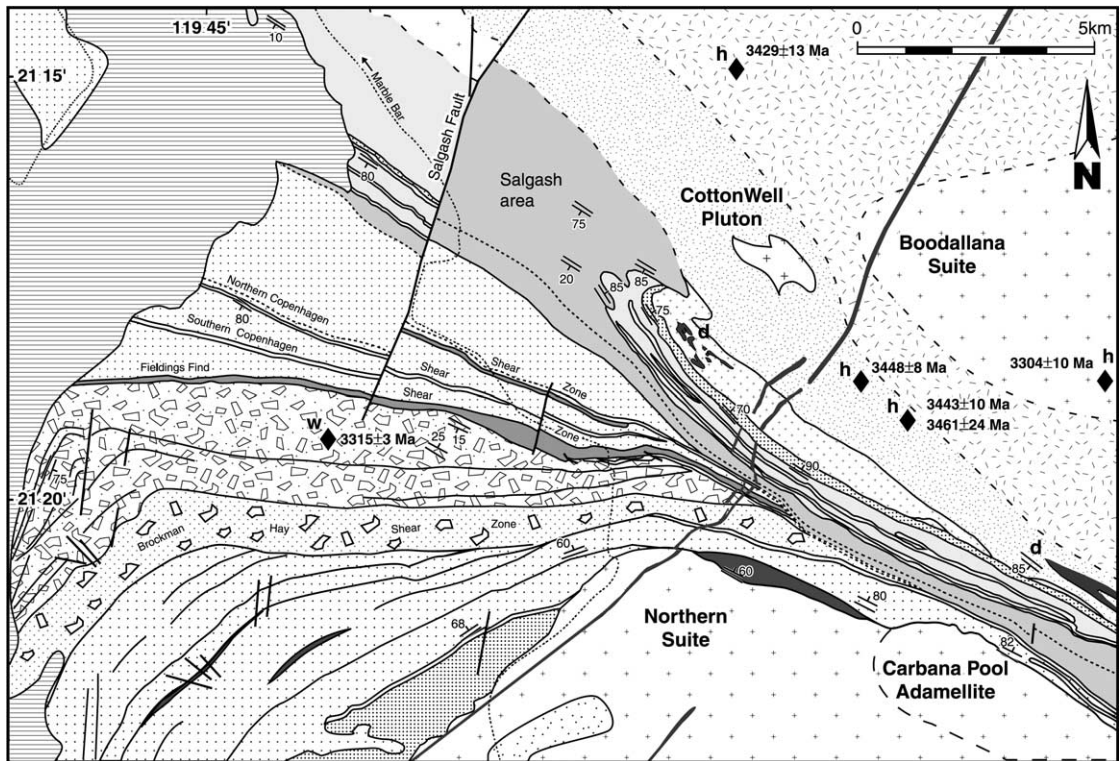


Fig. 4. Lithological map of the western Warrawoona Greenstone Belt. Sites of published geochronological data are marked (for references see Fig. 2).